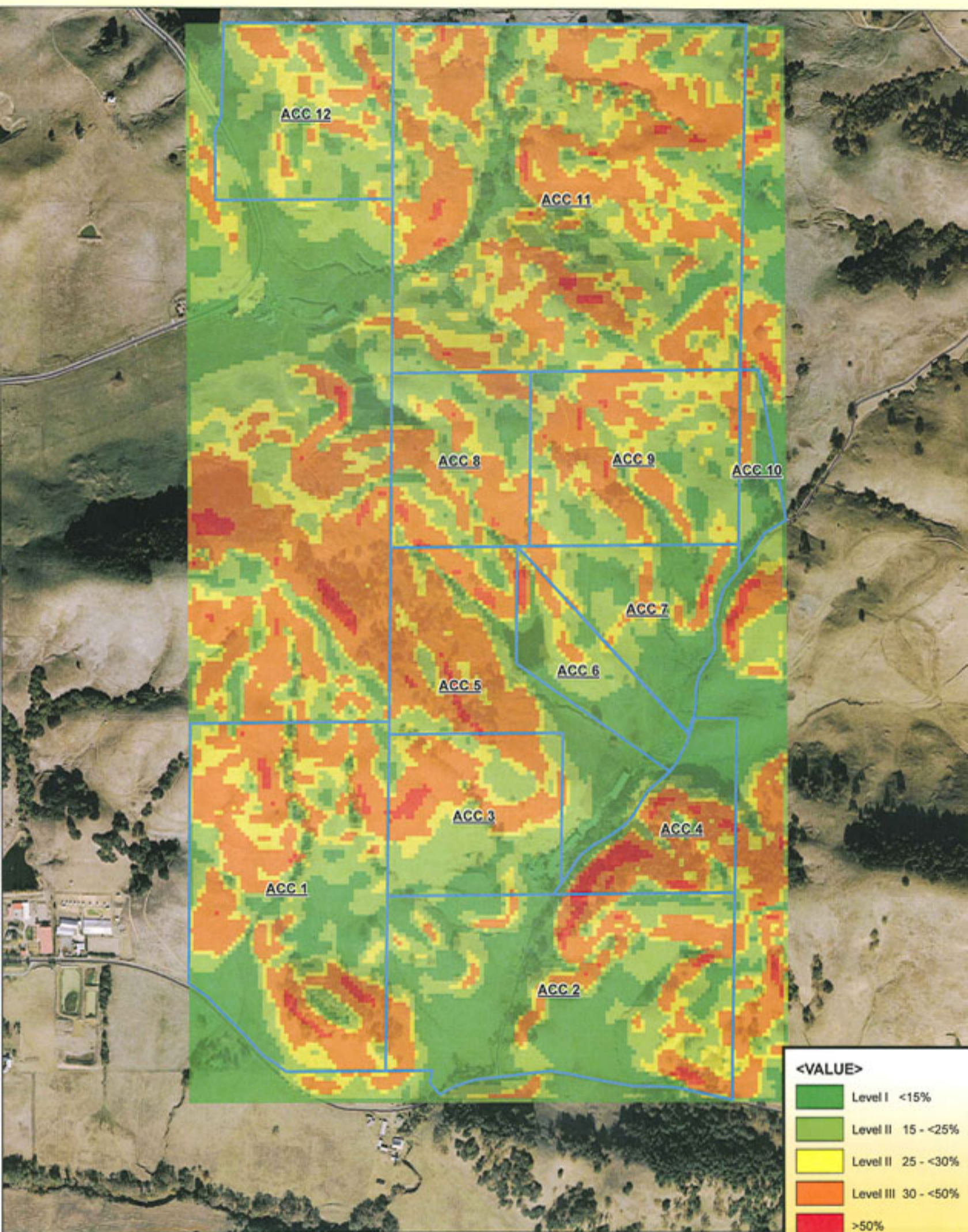
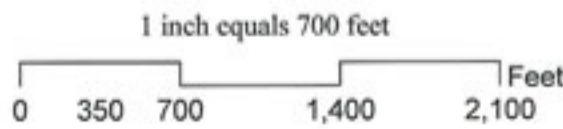


SLOPE CLASSIFICATION



<VALUE>	
	Level I <15%
	Level II 15 - <25%
	Level II 25 - <30%
	Level III 30 - <50%
	>50%

Assessor's Parcel No. 019-250-009, 010, 012, 013
San Antonio Road Petaluma, Sonoma County



MAPPING A BETTER WORLD
Ray Carlson & Associates, Inc.
LAND SURVEYING
411 Russell Ave. Santa Rosa CA 95403
707-528-7649 www.rcmaps.com
©2008 Ray Carlson & Associates, Inc.

SOURCES:
Contours and slope analysis by Ray Carlson & Assoc.,
Inc using USGS National Elevation Dataset from Image
Peak Systems Corp.
Parcel and street data from County of Sonoma.
Orthophotography by DigitalGlobe Inc, December 2005.